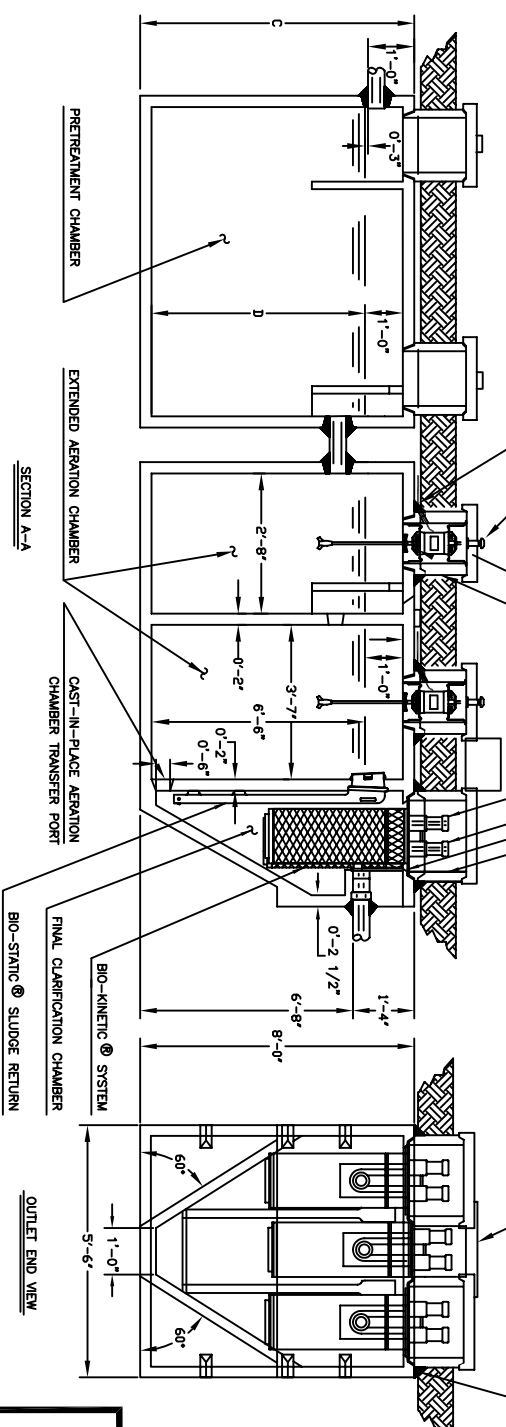


AERATOR MOUNTING CASTING

SINGULAR® AERATOR (SEE NOTE 1)

NORMECO FRESH AIR VENT ASSEMBLY

UNDERGROUND POWER SUPPLY ENTRANCE
(SEE AERATOR MOUNTING AND INSTALLATION
DETAIL DRAWING)



GENERAL NOTES

1. SINGULAR® AERATOR, AS TESTED AND ACCEPTED BY NSF.
2. FALL THROUGH SINGULAR® PLANT FROM INLET INVERT TO OUTLET INVERT IS FOUR INCHES. INLET INVERT IS TWELVE INCHES BELOW TANK TOP.
3. ON DEEPER INSTALLATIONS, RISERS MUST BE USED TO EXTEND AERATOR MOUNTING CASTING AND BIO-KINETIC® SYSTEM MOUNTING CASTING TO GRADE. INSPECTION COVER ON PRETREATMENT CHAMBER MUST BE DEVELOPED TO WITHIN TWELVE INCHES OF GRADE.
4. TANK SHALL BE WATER TIGHT. WALL THICKNESS MAY VARY FROM THAT SHOWN.
5. REMOVABLE PLASTIC COVERS ON RISERS WEIGH IN EXCESS OF SEVENTY-FIVE POUNDS EACH TO PREVENT UNAUTHORIZED ACCESS. PLASTIC COVERS ARE BOLTED TO RISERS.
6. PRETREATMENT CHAMBER MINIMUM REQUIREMENTS SHALL BE: 1500 GALLONS CAPACITY, 22 GALLONS PER INCH OF LIQUID LEVEL, AND 12 INCHES OF FREEBOARD. DIMENSIONS A,B,C&D MAY VARY TO SUIT CAPACITY REQUIREMENTS. ROUND PRE-TREATMENT TANK MAY BE USED.
7. TOTAL SYSTEM CAPACITY: 3400 GAL.

NO SCALE

U.S. AND FOREIGN PATENTS GRANTED AND PENDING - NORMECO, INC.

FILE NAME: 1500 GPD

SINGULAR® BIO-KINETIC®
WASTEWATER TREATMENT SYSTEM

MODEL 960
1500 GPD TREATMENT CAPACITY
CLEAR WATER SOLUTIONS LLC

KONA, HI
Tel: 866 328 9265 Fax: 866 370 9265