

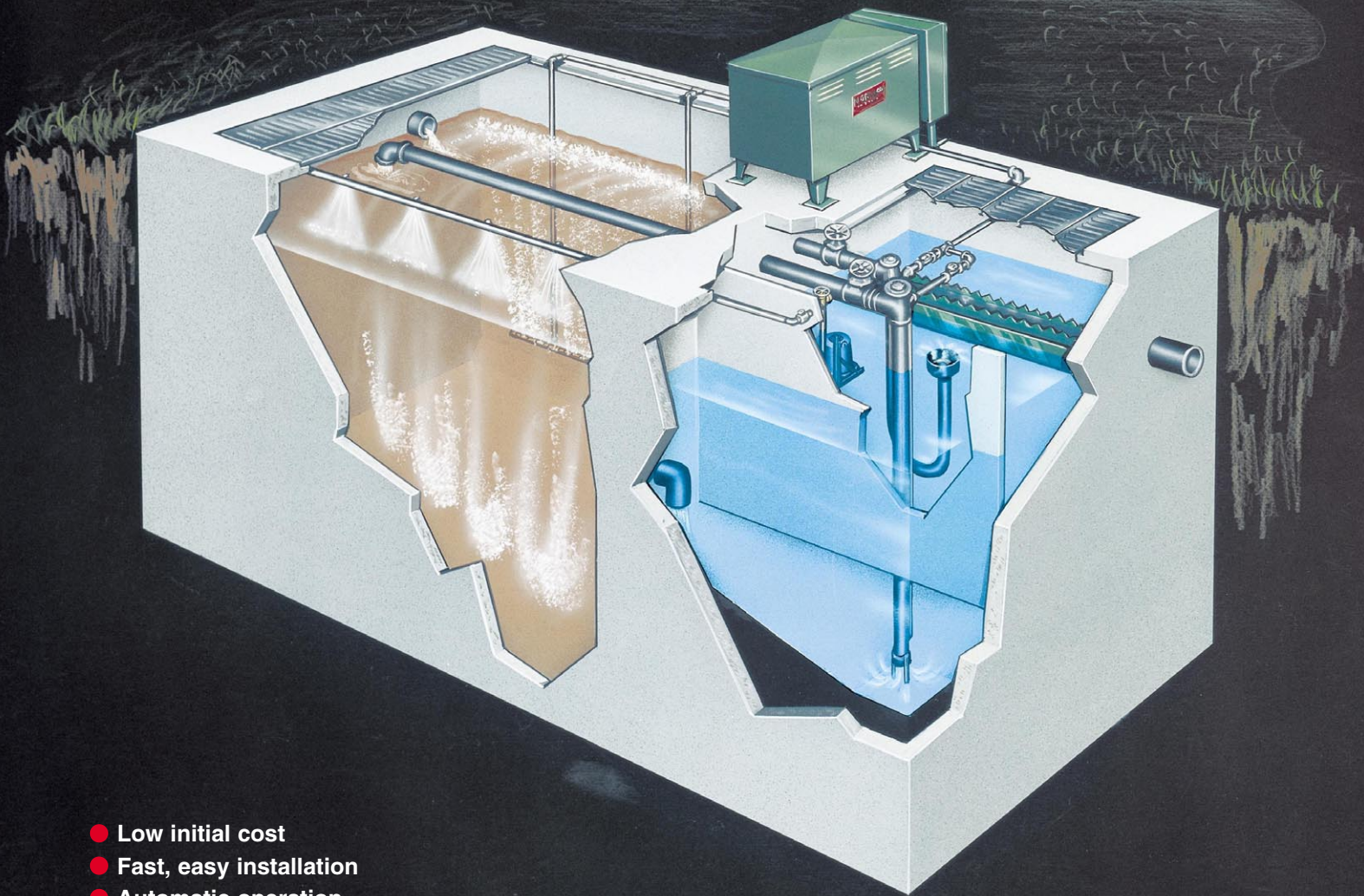
NORWECO.

NORWALK WASTEWATER EQUIPMENT COMPANY

MODULAIR®

PACKAGE WASTEWATER TREATMENT PLANTS

Featuring Norweco's exclusive
Modulair® concept designed
for today's needs-tomorrow's growth



- Low initial cost
- Fast, easy installation
- Automatic operation
- Permanent precast concrete tank
- Equipment fully guaranteed
- Service available locally

● Capacities to 500,000 GPD

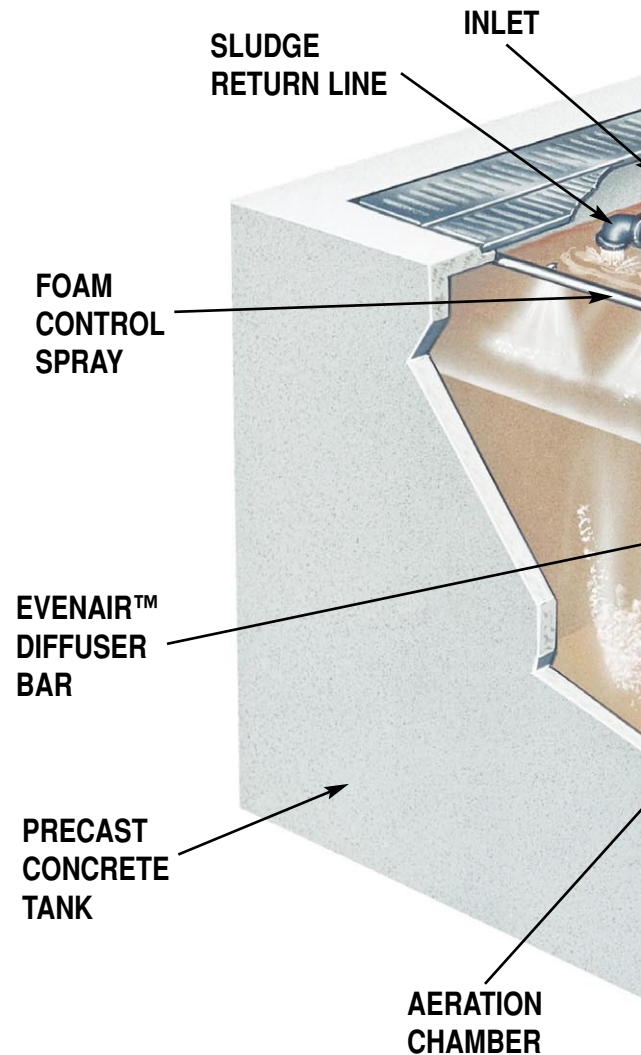
NORWECO'S MODULAIR® WASTEWATER TREATMENT SYSTEM

Norweco wastewater treatment plants employ a biological process known as "extended aeration" or "aerobic digestion." In this process wastewater passes through a series of progressive treatment stages.

Incoming sewage first passes through a pre-treatment device. Pre-treatment is used to physically break down the sewage and trap untreatable material before it can enter the aeration chamber of the treatment plant. There are three types of pre-treatment devices – bar screens, comminutors and trash traps. Bar screens strain or screen incoming sewage. Comminutors screen and grind the sewage before passing it to the aeration chamber. Trash traps are holding tanks used to settle out untreatable material and biochemically break down organic solids before passing them to the aeration chamber.

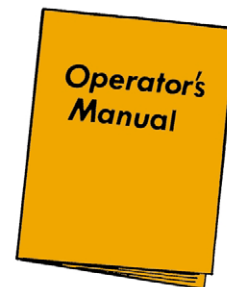
The second step in the treatment process is aeration. Pre-treated liquids enter the aeration chamber where they are thoroughly mixed and aerated with large volumes of air. Aerobic bacteria, present in the aeration chamber, use the oxygen transferred from the air to convert the sewage to clear, odorless liquids and gases. To obtain such complete treatment in just twenty-four hours it is necessary to provide just the right environment for the bacteria. This is accomplished by the controlled introduction of oxygen into the chamber. Norweco's unique "Evenair" diffusers are designed just for this purpose. They are installed in the bottom of the chamber to provide even distribution of oxygen into the aeration tank. Stimulated by the abundant supply of oxygen, the bacteria multiply rapidly and are thoroughly mixed with the tank contents to insure complete oxidation of all organic material.

After twenty-four hours in the aeration chamber the liquid flows into the settling/clarification chamber where the final phase of treatment takes place. In this chamber there is no mixing; the liquids are kept perfectly still so suspended particles can settle and be pumped back to the aeration chamber for final treatment. This process of removing the activated sludge and suspended particles from the liquid leaves a clear, highly treated water at the top of the chamber for discharge from the system.

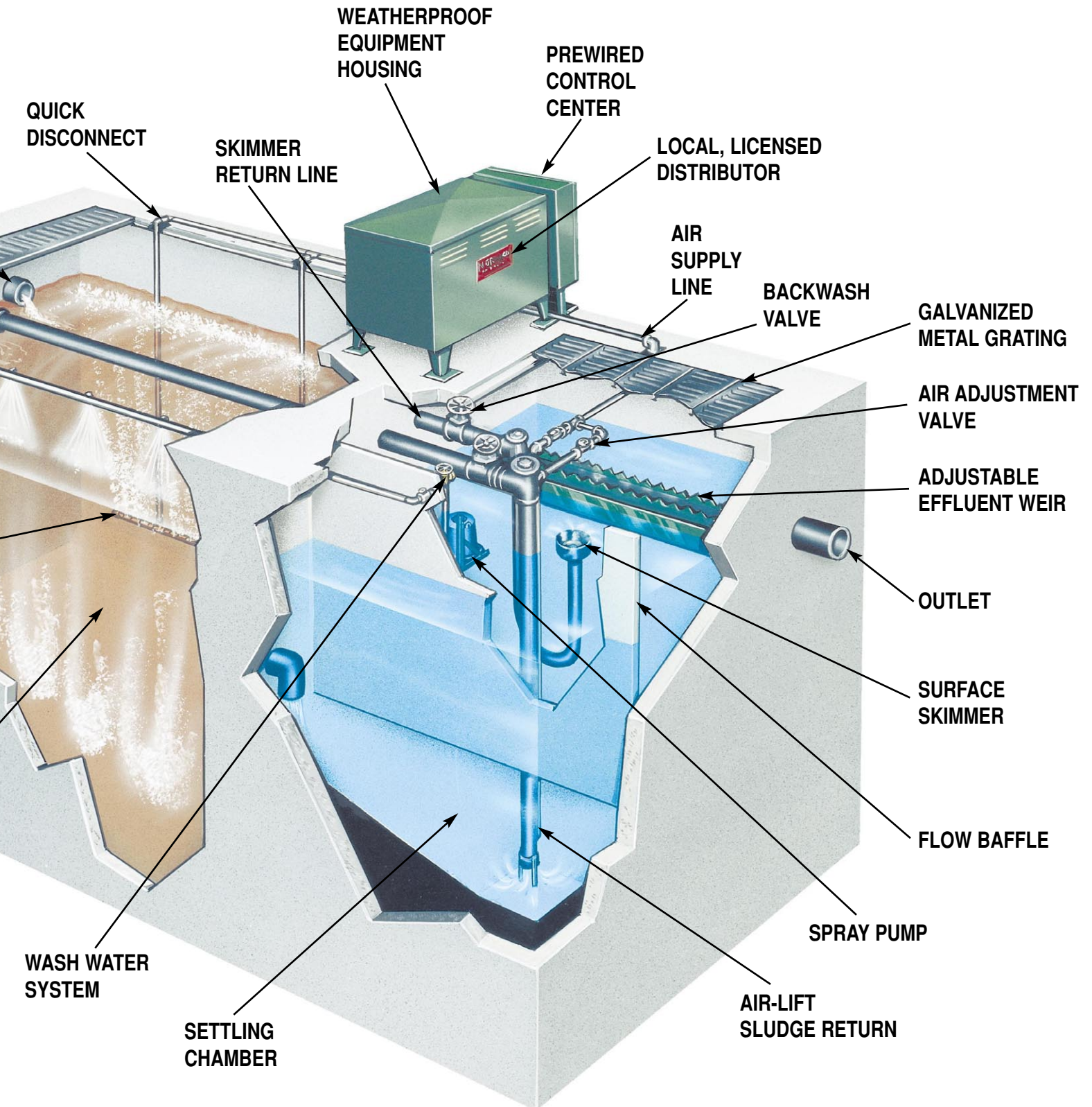


MODULAIR® OPERATION

A complete comprehensive OPERATOR'S MANUAL is supplied with each system. This manual, along with periodic inspections by a Norweco field technician, provides complete training of the plant operator, eliminates all guesswork and insures highly efficient operation.



WASTEWATER TREATMENT PLANT



U.S. and Foreign Patents Pending

Norweco®, Singlair®, Modulair®, Travalair®, Microsonic®, Lift Rail®, Bio-Kinetic®, Bio-Sanitizer®, Bio-Neutralizer®, Bio-Static®, Bio-Dynamic®, Bio-Gem®, Grease Buster® and "BUSTER" logo® are registered trademarks of Norwalk Wastewater Equipment Company, Incorporated.

**NORWECO'S MODULAIR®
CONCEPT - SATISFIES
TODAY'S NEEDS -
AND TOMORROWS . . .**

Heavy duty reinforced concrete tank modules provide flexibility with each installation. They also provide complete capability for adding future units.

Norweco's Modulair sections utilize a specially designed neoprene sealing gasket with tongue and groove joint to insure a positive tank seal and rugged structural stability. Sections are transported to the jobsite separately and set together to provide a completed tank. Each casting is a monolithic unit with no horizontal or vertical joints. All four walls of the tank are incorporated into each Modulair section.

Each module has all internal walls and baffles cast-in as an integral part of the tank. There are no slide in concrete or fiberglass baffles. There are no inserts or brackets fastened to tank walls below the surface of the liquid. Transfer ports and pipe holes are cast-in each section where needed. The gasketed tongue and groove joint runs the full width and length of each section to lock together adjoining Modulair units. As an added feature - a secondary seal is installed inside the tank over the primary seal. The castings themselves provide structural stability that is unmatched by poured-in-place concrete or steel tanks.



YOUR LOCAL EXPERT

Future expansion or modification of the system is often of prime importance. Physical tank arrangement and knock-outs may be included or modified wherever needed for future requirements. They can be installed to accommodate any size plumbing or component and will minimize expansion costs.

Mechanical equipment, pumps and controls are also important factors when considering an expansion. In many cases it is possible to provide equipment for the original installation that will be capable of serving the expansion.

Your local, licensed Norweco distributor has a complete understanding of the products and their application. He is well trained and able to capably help you plan for your current as well as future needs.

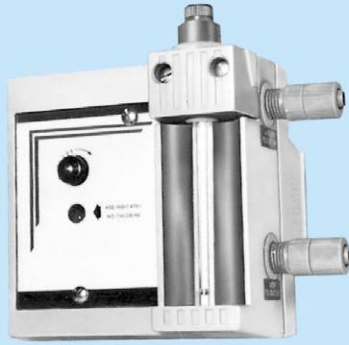
Developed by Norweco . . . the Modulair concept is the most reliable, maintenance-free method of wastewater treatment available today.

WARRANTY

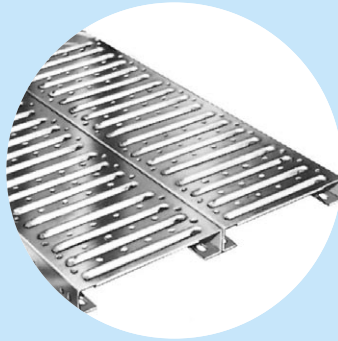
All Norweco, Inc. wastewater treatment systems include a single source one year warranty and service policy. The equipment is warranted against defective materials and workmanship, under normal use and service, for a period of one year. The warranty is limited to the replacement of any item that proves to be defective during the first year. Repair charges will apply if the equipment had been disassembled by unauthorized persons, subjected to external damage, improperly wired or flooded.

The initial one year warranty and service policy includes periodic service inspections. Operators are instructed regarding routine operation and maintenance of the equipment during each inspection. The warranty and service policy are designed to provide single source reliability for all equipment. Your complete Norweco Modulair wastewater treatment system is covered by the warranty and service program.

MODULAIR® COMPONENTS



Gas chlorinator



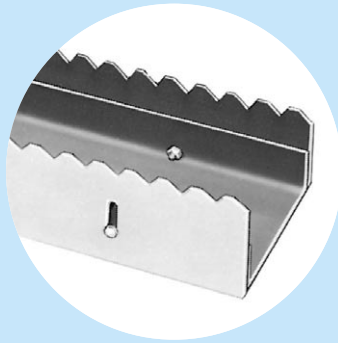
Galvanized metal grating



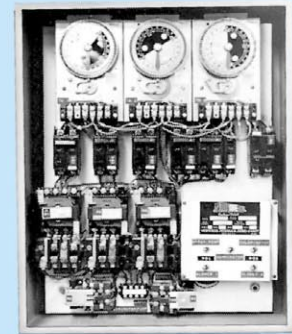
Non-clog spray nozzle



Liquid chlorinator



Adjustable effluent weir



Pre-wired electrical controls

MODULAIR® ADVANTAGES

- Monolithic concrete tank - common only to the Modulair system. Eliminates the need for a poured-in-place foundation slab in the excavation prior to installation.
- Duplex mechanical equipment - each unit capable of operating the entire system. Virtually eliminates plant down time.
- Central control panel - permits automatic alternation and operation. Places all controls at your fingertips.
- Weatherproof equipment cabinet - protects motors, blowers, filters and other equipment.
- Non-clog Evenair™ diffusers - eliminates periodic cleaning - reduces plant maintenance.
- Non-corrosive precast concrete tanks - no tank pumping and repainting, no anode packs.
- Air-lift surface skimmer - supplied with each system to simplify maintenance.
- Adjustable effluent weir - permits easy leveling from end to end and side to side.
- Master keyed locks - one key opens all locks on duplex cabinets, controls, covers and related equipment.
- Galvanized steel grating - provides complete safety, allows full access to equipment.
- Modulair plant concept - system may be enlarged or modified - complete future flexibility.



Typical
open
installation



Attractively enclosed system

EFFICIENT, ATTRACTIVE INSTALLATION

Norweco Modulair systems are delivered to the jobsite and erected within days by a qualified and competent distributor installation crew. All equipment has been factory assembled, pre-wired and tested. Site compactness, design simplicity, freedom from odors and low maintenance make the system an asset to the property.

Pollution control systems for

- Subdivisions
- Mobile home parks
- Schools
- Churches
- Motels
- Factories
- Restaurants
- Service stations
- Office buildings
- Shopping centers
- Vacation cottages
- Recreation camps
- Apartment buildings
and many others . . .

Norweco manufactures a complete line of wastewater pumping stations, wastewater treatment plants for larger applications and individual home wastewater treatment units in addition to the Modulair system.

LOCAL DISTRIBUTION

Norweco wastewater treatment systems are sold, installed and serviced by factory-trained Norweco distributors. They are fully trained regarding installation of Norweco products and are able to provide all necessary job coordination to insure a simple economical installation.

Each system is sold as a complete installation including delivery, tank setting, equipment installation, start-up and service. Even a series of ten service and adjustment inspections, which covers the first year of operation, is included in the sale. This unusual sales policy greatly simplifies plant operation and insures superior results.

"Progress through service since 1906" sums it up nicely. A quality product - serviced by a local expert - has earned Norweco a reputation for excellence.

NORWECO.
NORWALK WASTEWATER EQUIPMENT COMPANY

220 Republic Street
Norwalk, Ohio, U.S.A. 44857-1196
Phone (419) 668-4471
Fax (419) 663-5440
DISTRIBUTED BY: